



**4U Rackmount Chassis with 5 Drive Bays,
Retaining bar for 14-slot Backplane or ATX
Motherboard, Supports PS/2 Size PSU**

- Circuit Card Hold Down Bar
- Inter-changeable Rear Plate
- Supports PS/2 size Power Supply
- Internal Bracket for (1) 3.5" Drive
- Two Ball Bearing Fans
- Brackets for (3) 5.25" and (1) 3.5" Drive
- Front Door Latch



Introduction

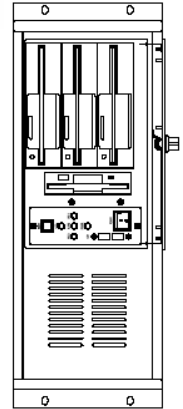
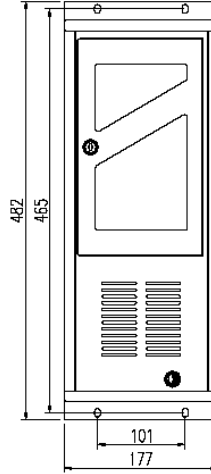
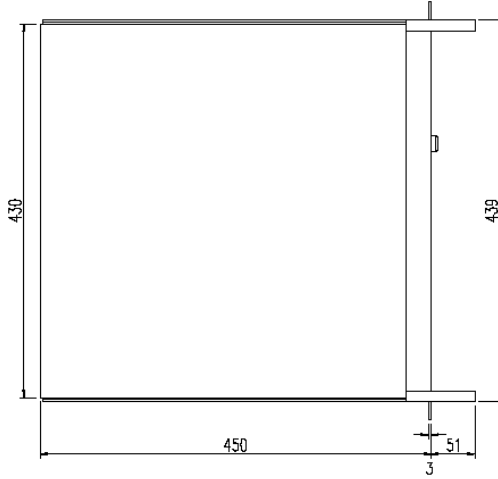
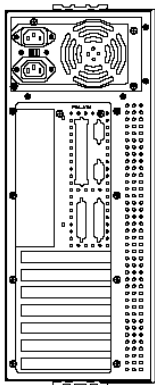
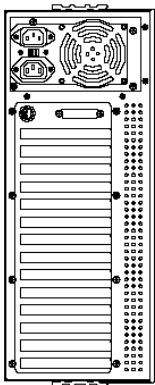
The **RCK-405** 4U Rackmount Chassis provides a cost effective solution for a variety of Industrial applications. It is easily configurable to support either an ATX Motherboard or a 14-slot PICMG backplane by simply changing the rear panel. The **RCK-405** can support up to five shock resistant drives (3-5.25"/1-FDD/1-HDD) and a retaining bar is included to hold expansion cards in place for those applications which encounter a high level of vibration. Both AT and ATX PS/2 size Power Supplies are supported by the **RCK-405** for any applications with unique power requirements.

Features

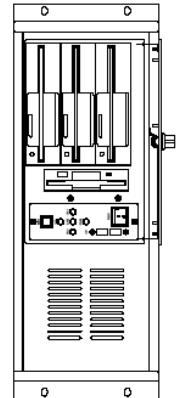
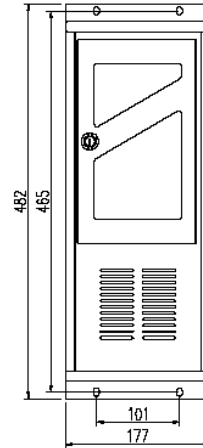
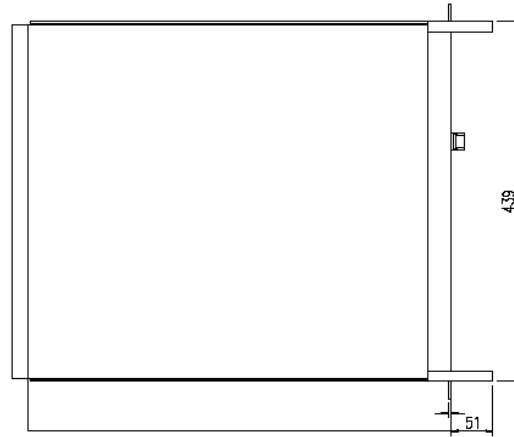
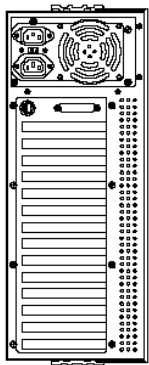
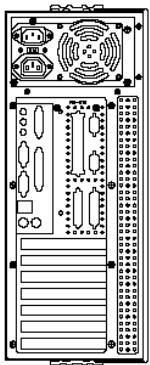
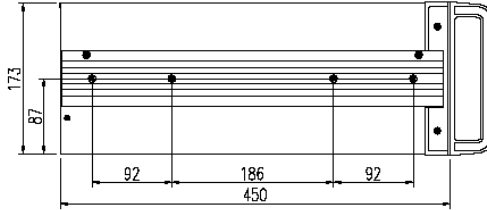
- 4U 19" Rackmount Chassis
- Front Panel with Lockable Door to Protect Drives
- (2) 3.5" and (3) 5.25" Drive Bays
- (2) Front USB 2.0 Ports (optional)
- Changeable rear I/O shield
- Anti Vibration Card Clamp
- Motherboard or Backplane Support



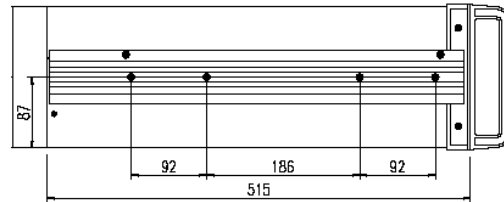
Mechanical Drawing



RCK-405B/405M



RCK-405ME/405BE





Construction

- Heavy duty steel with Ni plating

Color

- Black/Beige

Board Support

- Backplane (405B)/ ATX Motherboard (405M)/ Extended ATX Motherboard (405ME)

Drive Bays

- (3) 5.25" + (1) 3.5" external drives and (1) 3.5" internal drives

Expansion

- Depends on backplane or motherboard

Power Supply

- ATX power supply/ Mini-Redundant Power

Cooling System

- One 12 cm and one 8 cm ball bearing fans with replaceable air filter

Ports

- One front panel connector for keyboard
- Optional (2) USB ports on front panel

Switches

- On/Off Switch and Reset Switch

Indicators

- Power ON/OFF LED
- (6) HDD Active LED

Dimensions

- RCK-405M/405B:
449(W) x 450(D) x 177(H) mm
17.7(W) x 17.7(D) x 7(H) inches
- RCK-405ME/405BE:
449(W) x 514(D) x 177(H) mm
17.7(W) x 20.2(D) x 7(H) inches

Operating Temperature

- 0~55 °C

Gross Weight

- RCK-405M/405B: 13.8Kgs/30.4lbs
- RCK-405ME/405BE: 17Kgs/37.4lbs

Ordering Information

| | |
|------------------|--|
| RCK-405B | 4U Rackmount chassis, with (3) 5.25" and (2) 3.5" drive bays for 14/15-slot Backplane |
| RCK-405BE | 4U Rackmount chassis, with (3) 5.25" and (2) 3.5" drive bays for 14/15-slot Backplane |
| RCK-405M | 4U Rackmount chassis, with (3) 5.25" and (2) 3.5" drive bays for ATX motherboard |
| RCK-405ME | 4U Rackmount chassis, with (3) 5.25" and (2) 3.5" drive bays for ATX / Extended ATX motherboard |
| MT-PL01 | Optional back plate for RCK-405M/RCK-405ME with 2 fans |